

High Elevation Wildfire Aggravates Water Quality Concerns in the Cache le Poudre Watershed



Fire on The Mountain
Sustaining CO Watersheds
Avon, Colorado
6 Oct 2021

Chuck Rhoades & Tim Fegel - US Forest Service, Rocky Mountain Research Station

Katie Willi & Matt Ross (CO State U.)

Jared Heath & Richard Thorp (City of Ft Collins)

Hally Strevey (Coalition for Poudre River Watershed)

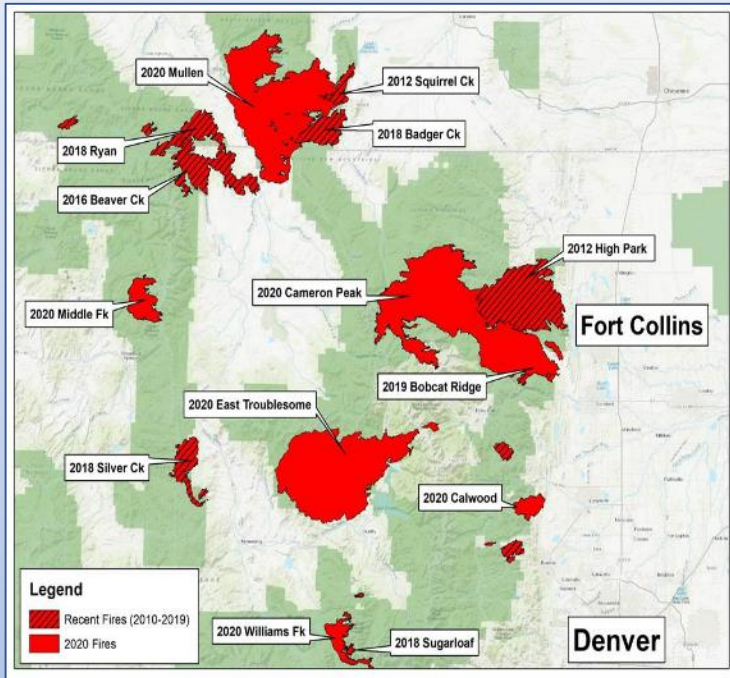


Fires are Burning at Higher Elevations than Ever, Creating New Dangers

Hayley Smith, LA Times, SEPT. 14, 2021

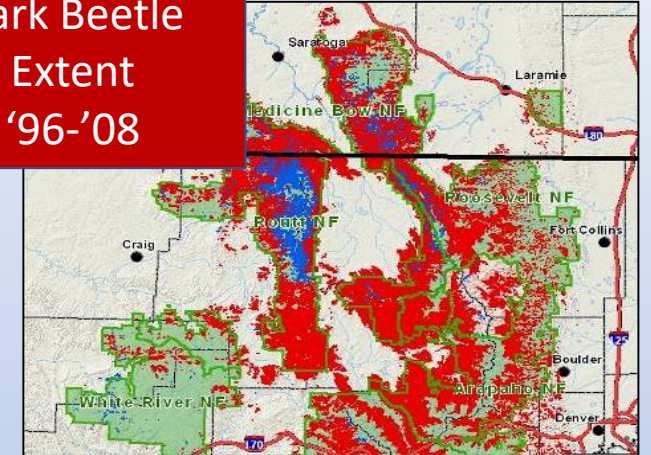
“Forest fires of the western United States have advanced upslope over the past few decades, scorching territories previously too wet to burn.”

Alizadeh et al. 2021, PNAS



High Elevation / Subalpine Forests	Fire Return Interval
Spruce-Fir	150-300+ yrs
Lodgepole Pine	90-300+ yrs
Low Elevation / Montane Forests	
Ponderosa Pine	10- 50 yrs

Bark Beetle Extent '96-'08



	Lodgepole	Spruce Fir	Mixed Conifer	Ponderosa	Grass Shrub	Rock Alpine	Other
Mean	76.4	8.2	0.1	1.2	5.3	7.3	1.5
Min	13.5	0.3	0.0	0.0	0.7	0.0	0.2
Max	97.0	57.5	0.3	7.5	16.5	47.8	6.2

Gray Phase Fires

	Acres
2010-2019	150,000
2020	>600,000

Watershed Responses & Long-term Effects

Track Burn Severity

Low Severity

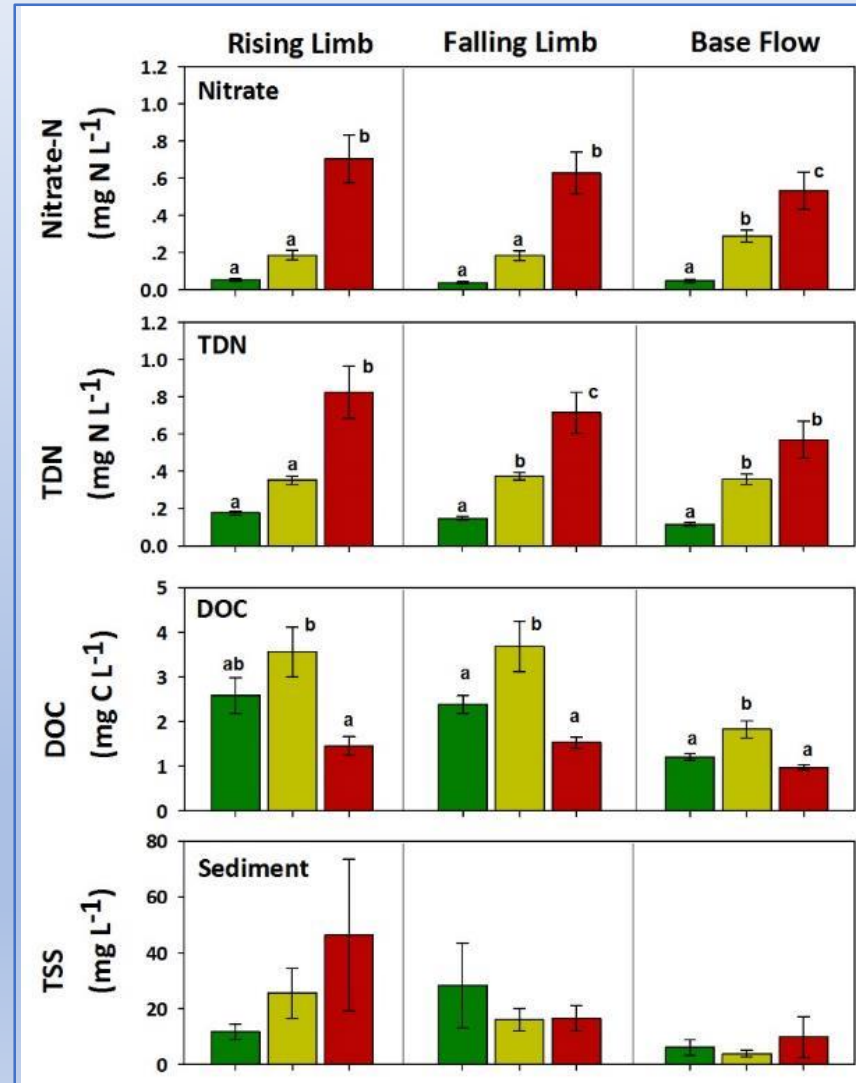
Vegetation remains 'green.' OM layers not fully consumed. Soil structure, roots unchanged

Moderate Severity

Most (50-80%) ground cover, OM consumed. Foliage may remain in tree canopies.

High Severity

Consumption of nearly all pre-fire ground cover & surface organic matter.



Rhoades et al. 2019

2002 Hayman Fire

*14-15 yr post-fire

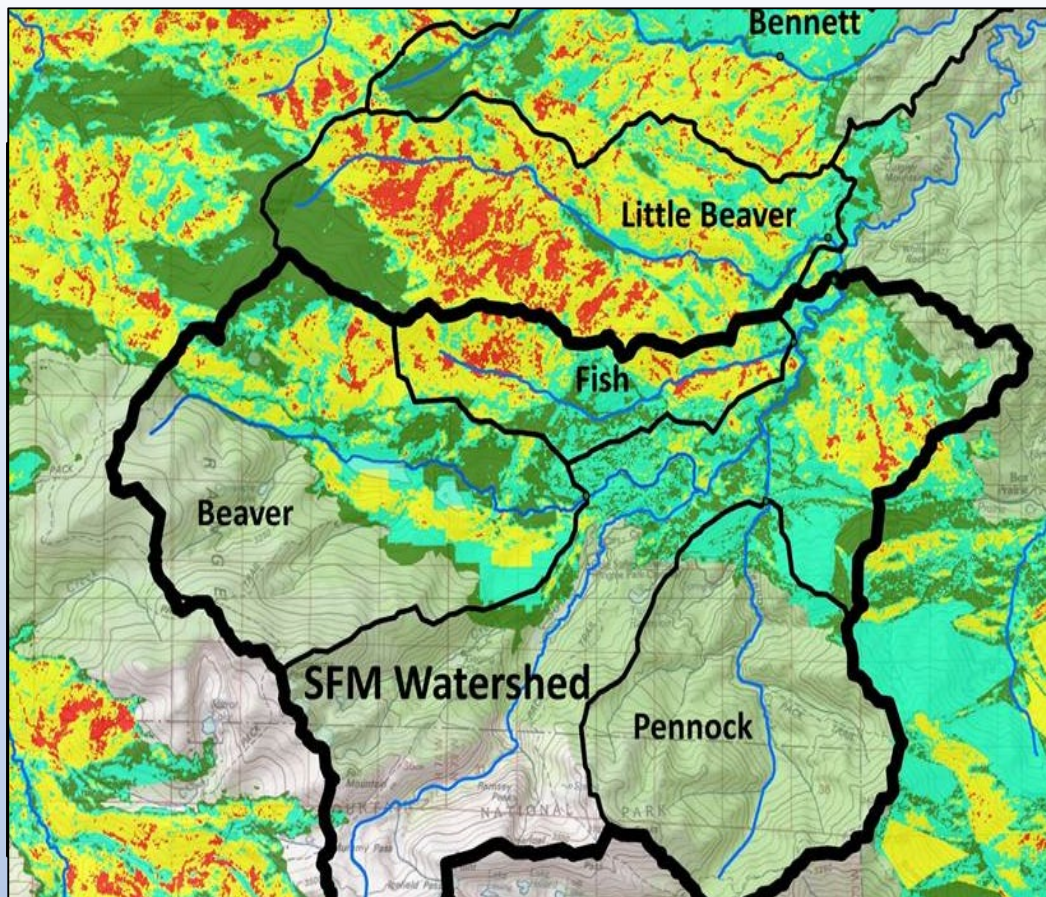
Nitrate & TDN 5-10X above background in Extensive & elevated in Moderate

Lasting changes in nutrient retention (>95% pre- vs 48% post-fire)

DOC highest for moderate burns

Sediment losses are minor





Severity at Watershed-Scale

Watershed	Area		Burn (%)	Hi	Mod	Lo	No	Hi+Mod
	(km ²)	(acres)		%				
Sheep	7	1,766	100	14	57	29	0	71
Little Beaver	47	11,561	86	17	51	18	14	68
Black Hollow	17	4,294	88	12	51	24	12	63
Fish	13	3,242	86	11	46	29	14	57
Tunnel*	7	1,672	89	12	32	46	11	43
Bennett	37	9,209	70	4	33	32	30	38
Sevenmile*	19	4,789	70	2	25	44	30	26
Roaring*	15	3,751	57	2	27	28	43	29
N. Joe Wright	9	2,243	41	13	11	17	59	24
Beaver	57	14,003	43	1	18	25	57	19
Fall	13	3,176	23	8	7	8	77	15
S. Fk. Poudre*	183	45,197	33	2	13	19	67	14
S. Lone Pine	22	5,501	24	0	13	10	76	14
Pennock	47	11,519	16	0	1	15	84	2
Deadman	37	9,172	0	0	0	0	100	0
N. Fk. Poudre	19	4,604	0	0	0	0	100	0

12 burned & 4 unburned; * pre and post-fire data

	High	Moderate	Low	Unburned	Acres
	----- % -----				
Cameron Peak	6	31	44	20	208,759
E. Troublesome	5	44	39	12	189,191
Mullen	24	41	22	13	176,878
Grizzly	12	43	33	12	32,438
Williams Fork	27	39	17	16	14,736
High Park (2012)	7	40	37	16	87,487
Hayman (2002)	35	16	34	15	138,114

Project & Talk Overview

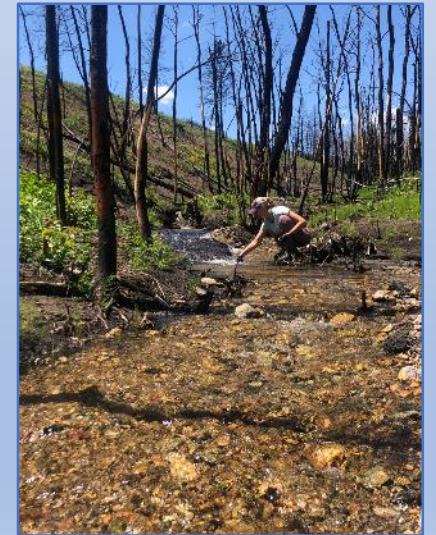
Overall Objectives

Examine the influence of the Cameron Peak fire on watersheds, water quality, aquatic ecosystems and water supply and storage and estimate downstream delivery of key constituents to water treatment utilities.

Expands on City of Fort Collins, Coalition for Poudre River Watershed, RMRS monitoring and citizen science.

Year 1 Activities

- 1) Characterize ash chemistry across the fire and major forest types.
Ash, char and mineral soil
- 2) Track post-fire water quality responses in headwater catchments burned by the Cameron Peak fire and the CLP.
Weekly, bi-monthly and storm event sampling.



Go to www.menti.com and use the code 5269 7556

What are your most serious post-fire water quality concerns?

- 1st | Ash
- 2nd | Sediment
- 3rd | Nutrients
- 4th | Carbon
- 5th | Metal
- 6th | Other
- 7th | None



Together
LIKE NEVER
BEFORE | 2021
SUSTAINING COLORADO
WATERSHEDS CONFERENCE



Ash Chemistry – *Varies with Depth, Ecosystem Type*

		pH		ANC		Ca		K		NH ₄		NO ₃		PO ₄	
		Mean	Max	Mean	Max	Mean	Max	Mean	Max	Mean	Max	Mean	Max	Mean	Max
		μeq L ⁻¹				mg L ⁻¹									
Ash	Subalpine	8.1	8.6	1713.0	2701.9	30.5	51.1	11.9	33.7	0.9	2.4	0.7	2.1	4.0	5.4
	Montane	8.1	8.3	2736.9	4823.2	38.1	63.2	33.2	58.1	0.6	2.2	0.3	1.0	5.5	7.7
	Riparian	8.4	8.9	3210.1	4756.2	31.3	54.8	47.8	88.8	1.2	2.6	1.8	3.6	4.3	11.0
O Horizon	Subalpine	7.5	8.2	2224.0	3359.1	36.8	49.6	15.2	48.7	1.8	2.8	1.7	2.5	5.4	8.3
	Montane	7.9	8.4	2425.8	3175.6	38.1	52.3	35.9	57.1	1.3	2.8	1.7	2.1	8.1	13.7
	Riparian	8.1	8.4	3830.9	5054.3	55.1	86.3	43.0	62.5	2.6	7.9	4.7	15.7	8.0	12.0
A Horizon	Subalpine	6.4	7.1	1252.0	2031.3	22.7	42.9	5.5	9.4	1.7	2.6	0.3	0.8	0.2	0.5
	Montane	7.2	7.4	3941.8	5549.2	73.2	100.3	28.2	46.5	1.1	1.6	0.8	1.0	0.9	1.3
	Riparian	7.4	8.1	3614.0	4521.9	66.7	90.4	36.4	70.0	3.1	9.2	0.7	1.0	1.9	5.0

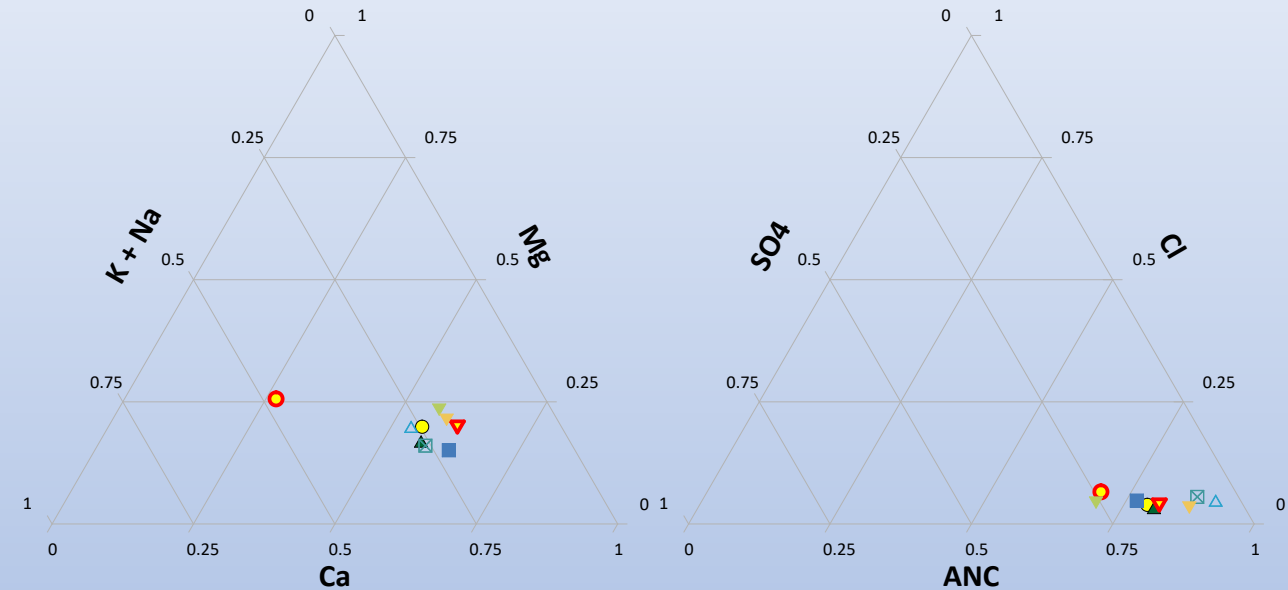


	Ca	K	NH ₄	NO ₃	PO ₄
	mg L ⁻¹				
Ash	33.3	31.0	0.9	1.0	4.6
Char OM	43.3	31.4	1.9	2.7	7.2
A Horizon	54.2	23.3	2.0	0.6	1.0
Unburn O Horizon	17.6	13.3	3.4	1.0	4.9
Unburn A Horizon	9.1	5.9	0.3	1.4	1.4
Char / O Horiz	2.5	2.4	0.5	2.8	1.5
Burn vs Unburn A Horiz	5.9	4.0	6.2	0.4	0.7



Fresh Ash Differs from Residual Ash, Soils, Water

		Ash		
		2020	2021	
		Fresh	Residual	Δ
K	mg L ⁻¹	490.5	28.5	17
Mg	"	87.1	7.6	12
Ca	"	192.5	32.4	6
PO₄	"	30.1	4.5	7
NO₃	"	13.1	1.0	13
NH₄	"	1.3	0.9	1
DTN	"	21.6	3.5	6
DOC	"	252.6	47.2	5
ANC	μeq L ⁻¹	19378.6	2423.0	8
Conductivity	μS cm ⁻¹	3147.1	328.7	10
pH		8.5	8.2	



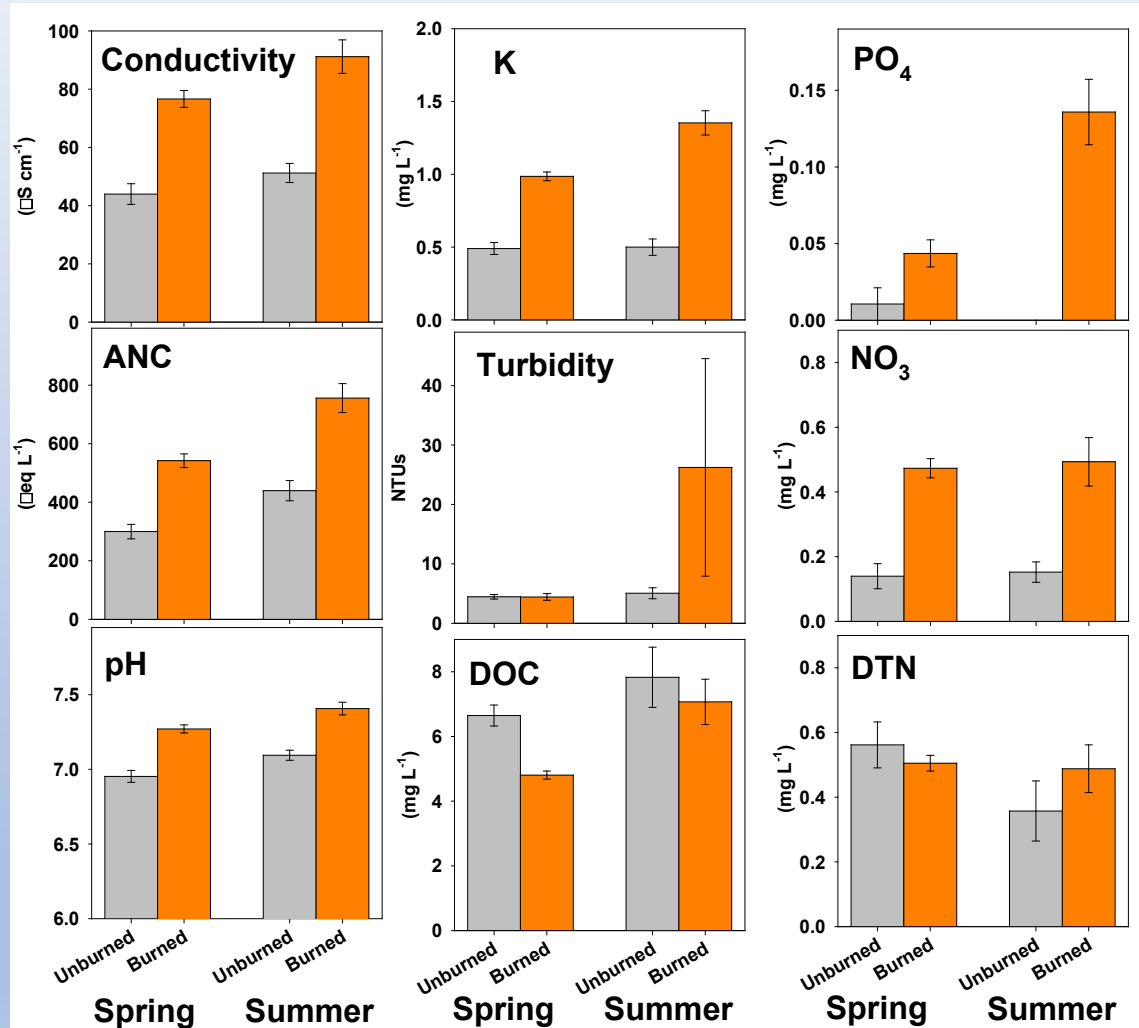
Fresh Ash has elevated K compared to residual ash
K is 50% in Fresh vs 20% in ash, soils, water

Large concentration differences before and after the first winter.

Fresh Ash: losses to wind and leaching into soils.

Residual Ash: material available for Year 1 surface runoff and losses to stream.

Tributary Water Quality Responses



Post-fire higher for most analytes

Cond, ANC, K, NO₃: 1.5 to 3-fold higher

PO₄, Turbidity: > 5-fold higher

pH: 0.4 unit pH higher

Post-fire increased vs Pre-fire

Cond, K, NO₃, 2-fold increase

NH₄, DTN, DOC:

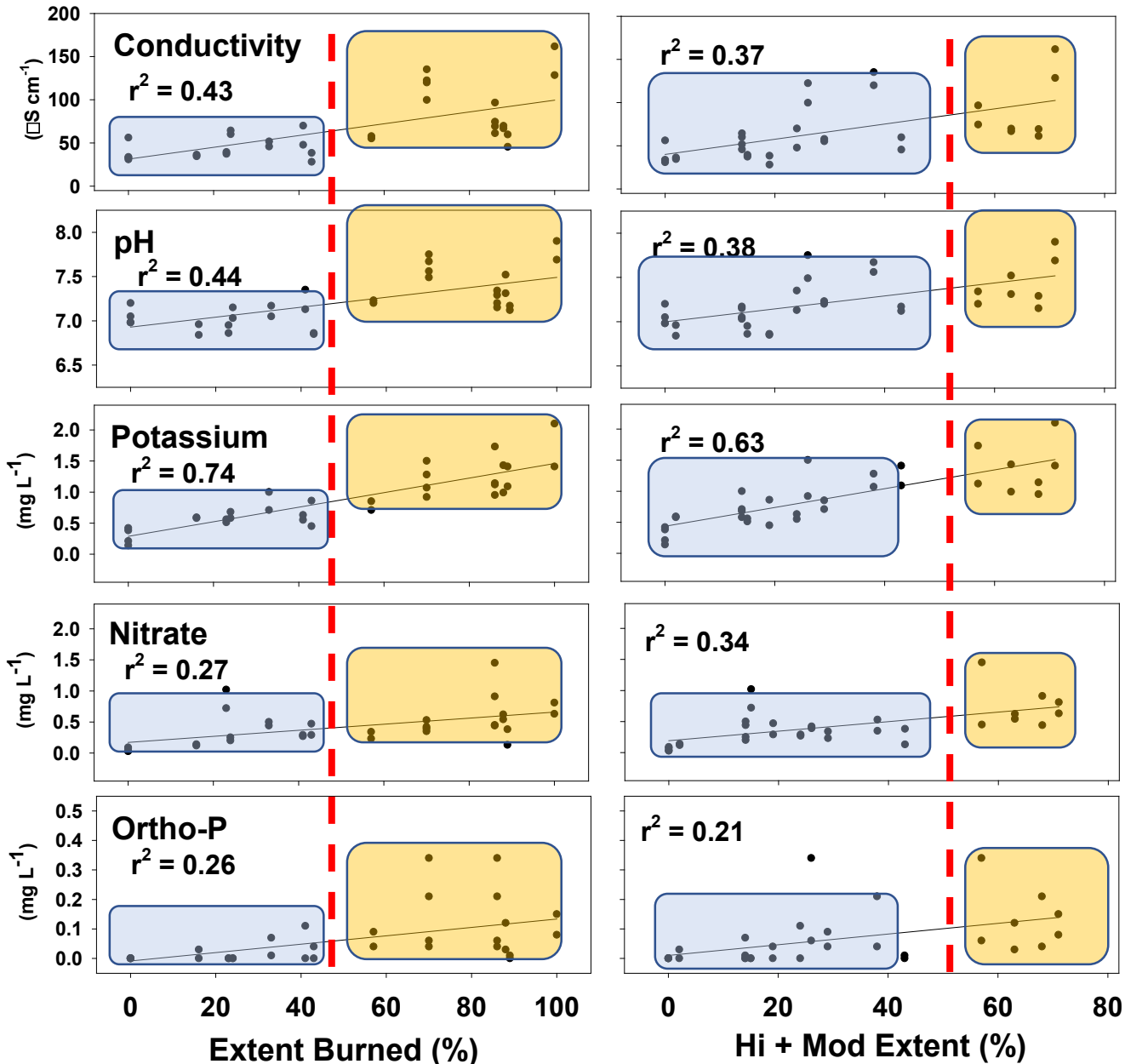
Turbidity: 10-fold increase

PO₄: 100-fold increase

*12 burned & 4 unburned catchments

4 pre- vs post-fire comparisons

Extent Burned & Severity Determines Stream Chemistry



The overall extent of a watershed burned, and the extent burned at Hi + Mod severity impact water quality

> 50% Burn Extent Threshold

2X more than < 50% + Unburned

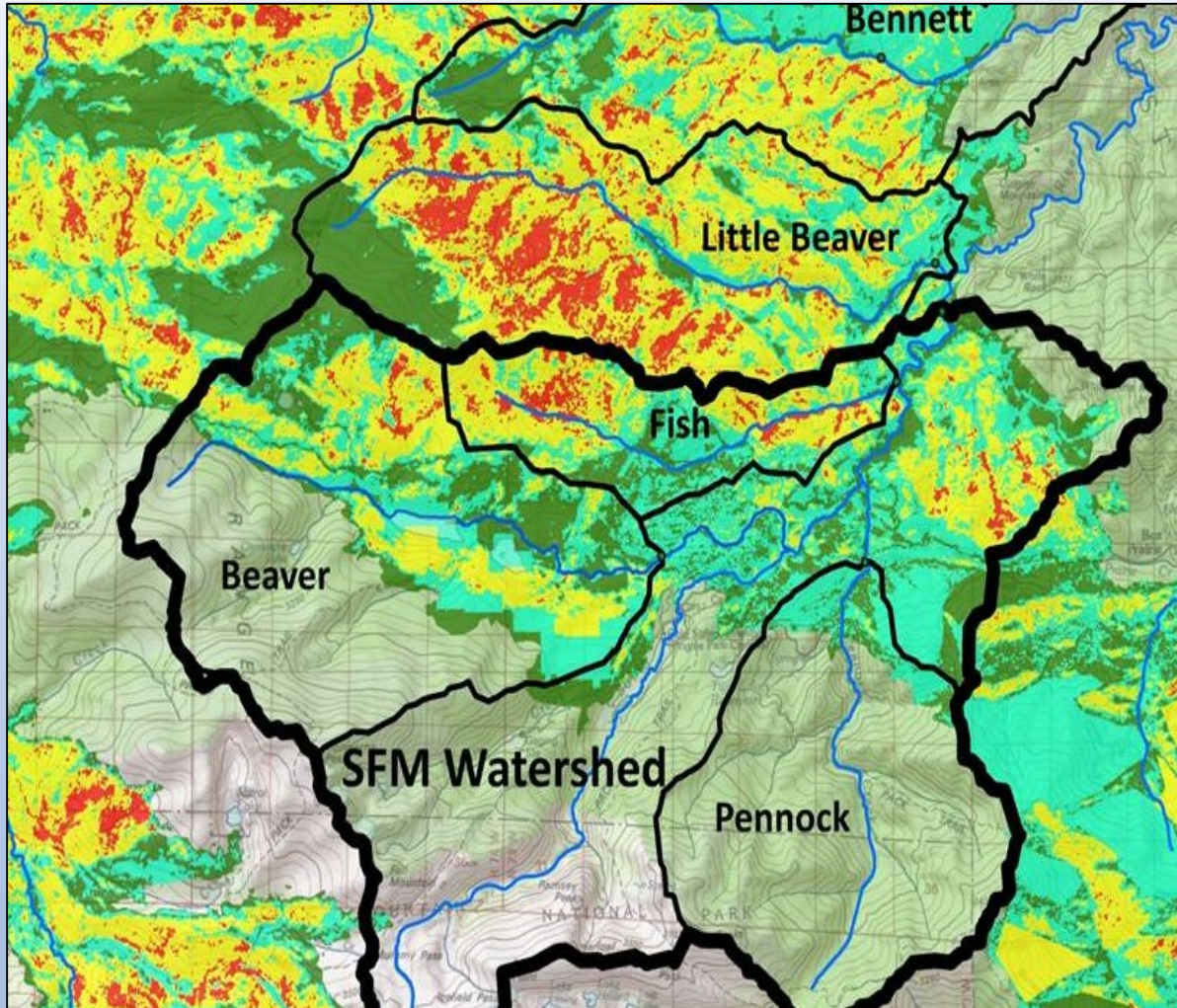
ANC, SC, Na, K, Mg, Ca, NO₃, SO₄

7X more PO₄; 6X more Turbidity

NO₃: Even watershed with lower extent burned were significantly higher than unburned

* 12 Burned & 4 Unburned catchments
Spring & Summer 2021

Catchment Comparisons

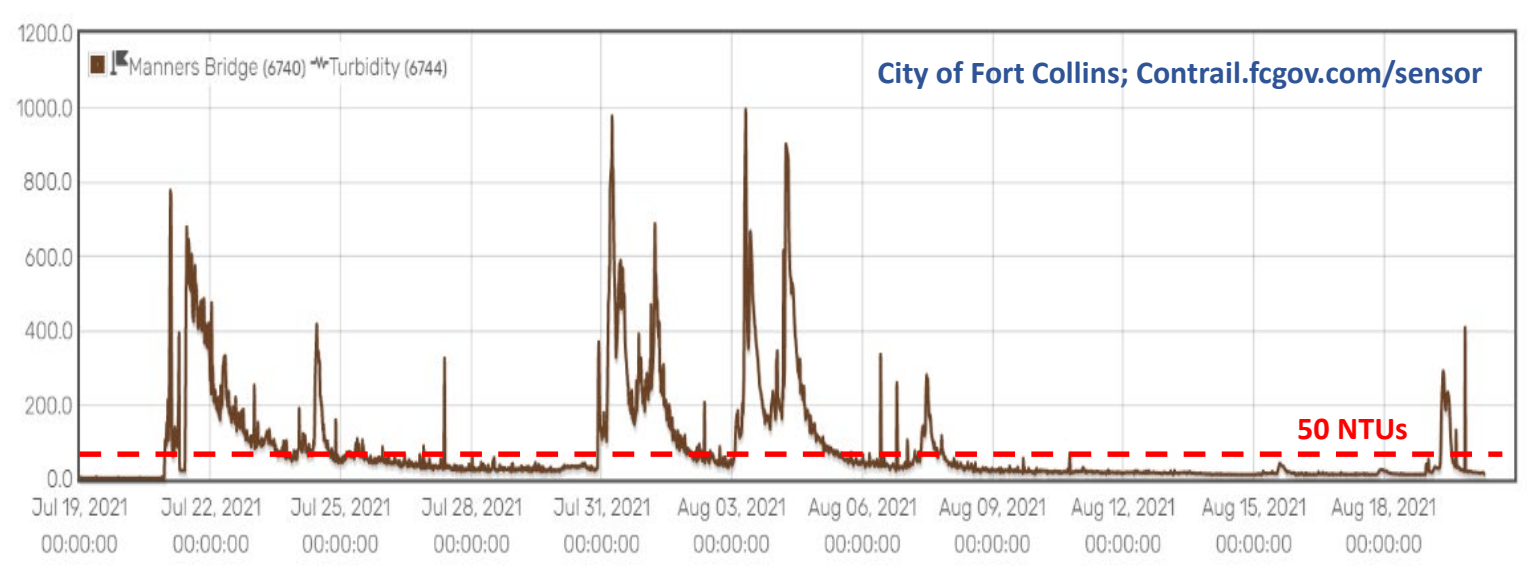


	NO ₃	PO ₄	Burn	Hi + Mod
	mg L ⁻¹		%	
Fish	1.4	0.3	86	57
Little Beaver	0.9	0.2	86	68
Beaver	0.3	0.0	43	19
Bennett	0.4	0.2	70	38
S. Fk. Poudre	0.5	0.1	33	14
Pennock	0.1	0.0	16	0
Sheep	0.6	0.1	100	71
Black Hollow	0.6	0.1	88	63

Larger Responses: Extensive burning, burned headwaters, small catchments

Smaller Responses: Large catchments, unburned headwaters

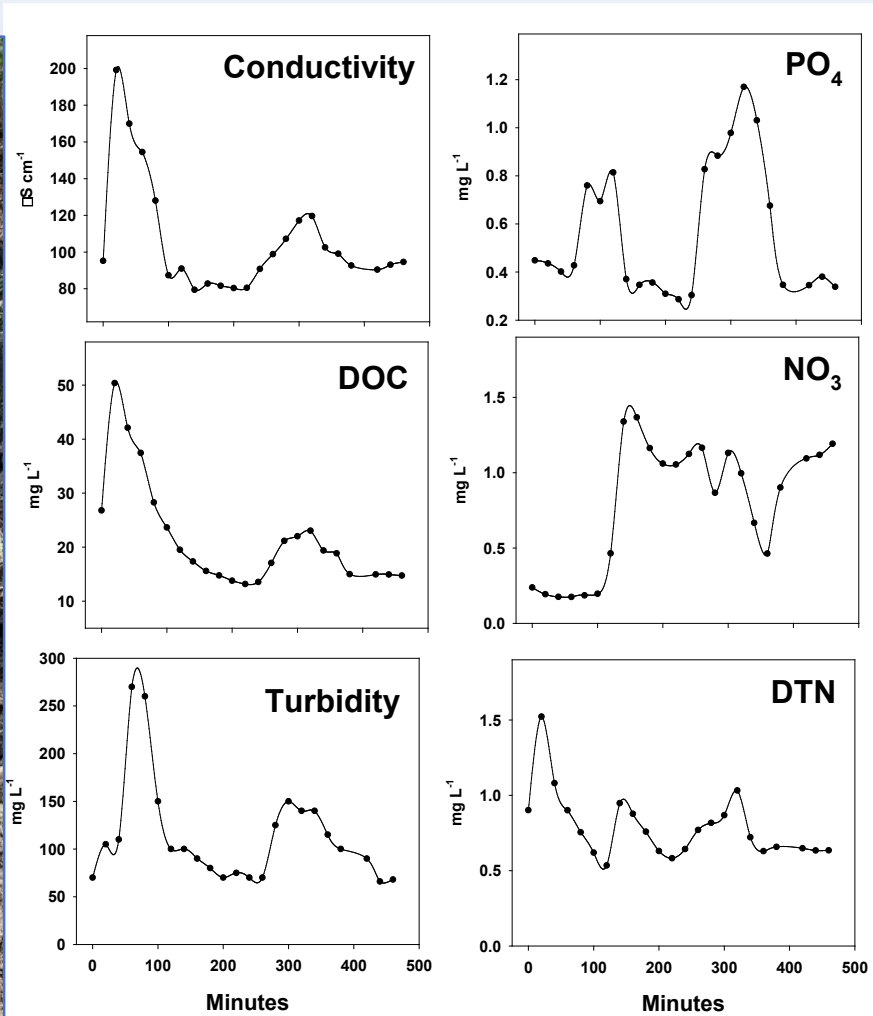
Summer Monsoon Storms – Major Watershed Changes



Fort Collins Utilities ceases taking water when turbidity exceeds 50 NTUs

	Amount	Intensity (I_{10})	Storm Duration	
			Downpour	Overall
	inches	in hr^{-1}	minutes	
Mean	0.4	0.8	16.7	133.1
Max	0.8	1.5	28.0	264.0

Summer Storms - *Temporal Patterns in Stream Water*



	Minutes to Peak	
	Mean	Max
Conductivity	47	110
Turbidity	124	300
DOC	94	460
DTN	80	440
NH ₄	96	460
NO ₃	97	200
PO ₄	190	520

* 7 storms; Fish Ck



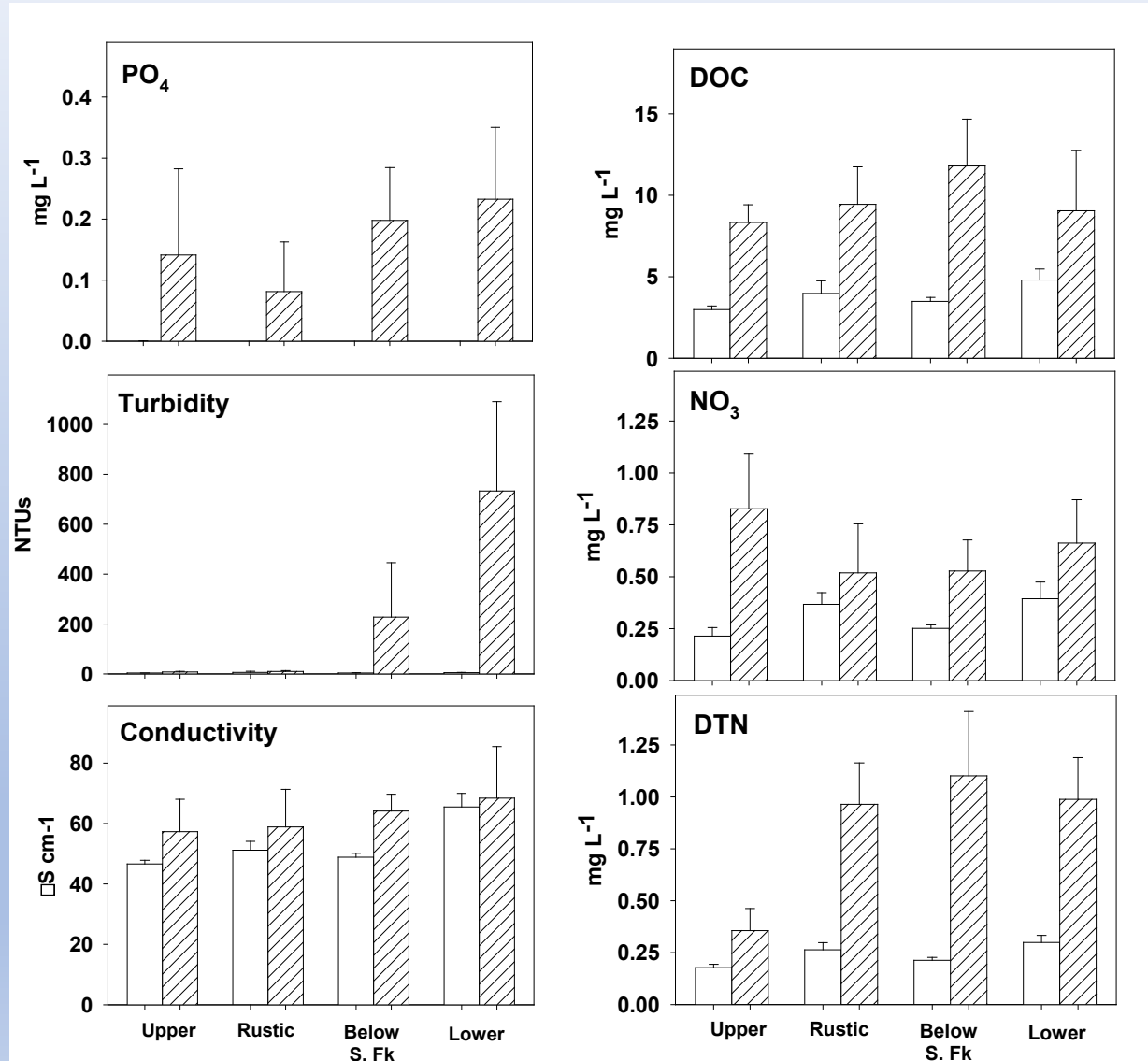
Storm Events Mobilize Hillslope Ash

		Turbidity	Cond.	DOC	DTN	NH₄	NO₃	PO₄
Storm Events	Mean	1495.0	184.4	52.5	2.5	0.5	2.5	0.7
	Peak	Max	1670.0	272.6	86.0	4.1	1.2	5.4
Non-Storm	Mean	7.4	82.9	7.3	0.7	0.0	0.9	0.2
	Monthly Mean	Max	15.3	109.4	10.7	1.4	0.1	1.5
Storm vs Non	Mean/Mean	202	2	7	3	10	3	4
	X-fold increase	Max/Mean	226	3	12	6	25	6

*Summary from 7 storms in July & August at Fish Crk ISCO

The first storms were largest with the biggest water quality responses.
The size and response both declined for latter storms.

Monsoon Storms Effect CLP Water Quality

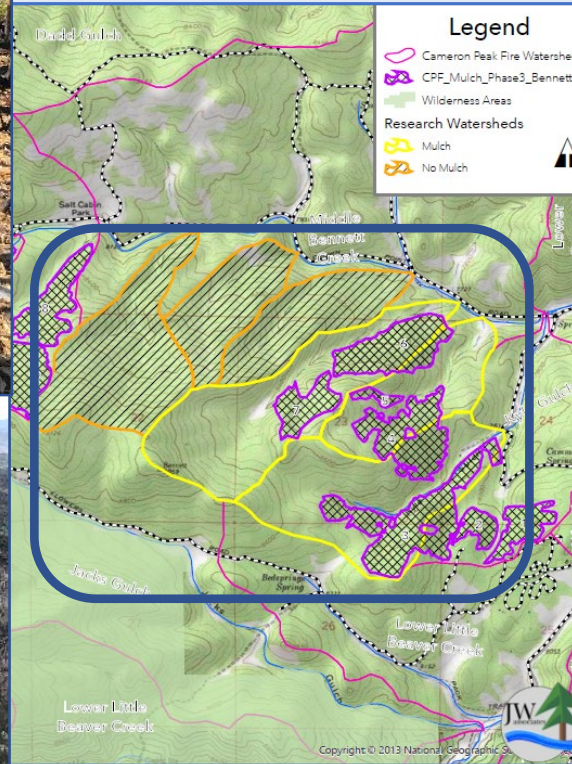


Responses extend
& increase
downstream

Maximum Values
 Turbidity 1150 NTUs
 DOC 21 mg/L
 DTN 2.3 "
 NO₃ 1.3 "
 PO₄ 0.4 "

* 4 storms (7 & 8/21)
vs. non-storm, post-fire

Steps Toward Watershed Recovery



Mulch treatments to protect water quality, and speed recovery of soil productivity and vegetation.

Tree planting to rehabilitate highly impacted riparian vegetation and enhance watershed nutrient retention and improve water quality and aquatic habitat

Preliminary Post-fire Responses

Ash is high in alkalinity, K, N and P, and these constituents are responsible for changes in downstream water quality in Yr 1.

Intense rain events have major effects on stream water quality that propagate down the main stem of the CLP.

Waters quality in burned tributaries is altered compared to pre-fire conditions and unburned streams.

Post-fire effects track the extent and patterns of burning in headwaters catchments

Stream waters quality responses help prioritize restoration activities and gauge restoration success



Go to www.menti.com and use the code 32 51 12 8

Has your municipality, agency or watershed group had to respond to changes in post-fire water quality? Yes/No? If so, how?



Together
LIKE NEVER | 2021
BEFORE
SUSTAINING COLORADO
WATERSHEDS CONFERENCE

Press ENTER to pause scroll



THANKS!

Contact: charles.c.rhoades@usda.gov



Coalition for the
Poudre River
Watershed

