

FOR THE LOVE OF THE FOREST:  
SHARING THE ROUND MOUNTAIN  
FOREST DEMONSTRATION WITH OUR  
COMMUNITIES



**Courtney Gutman**

Acting Director |

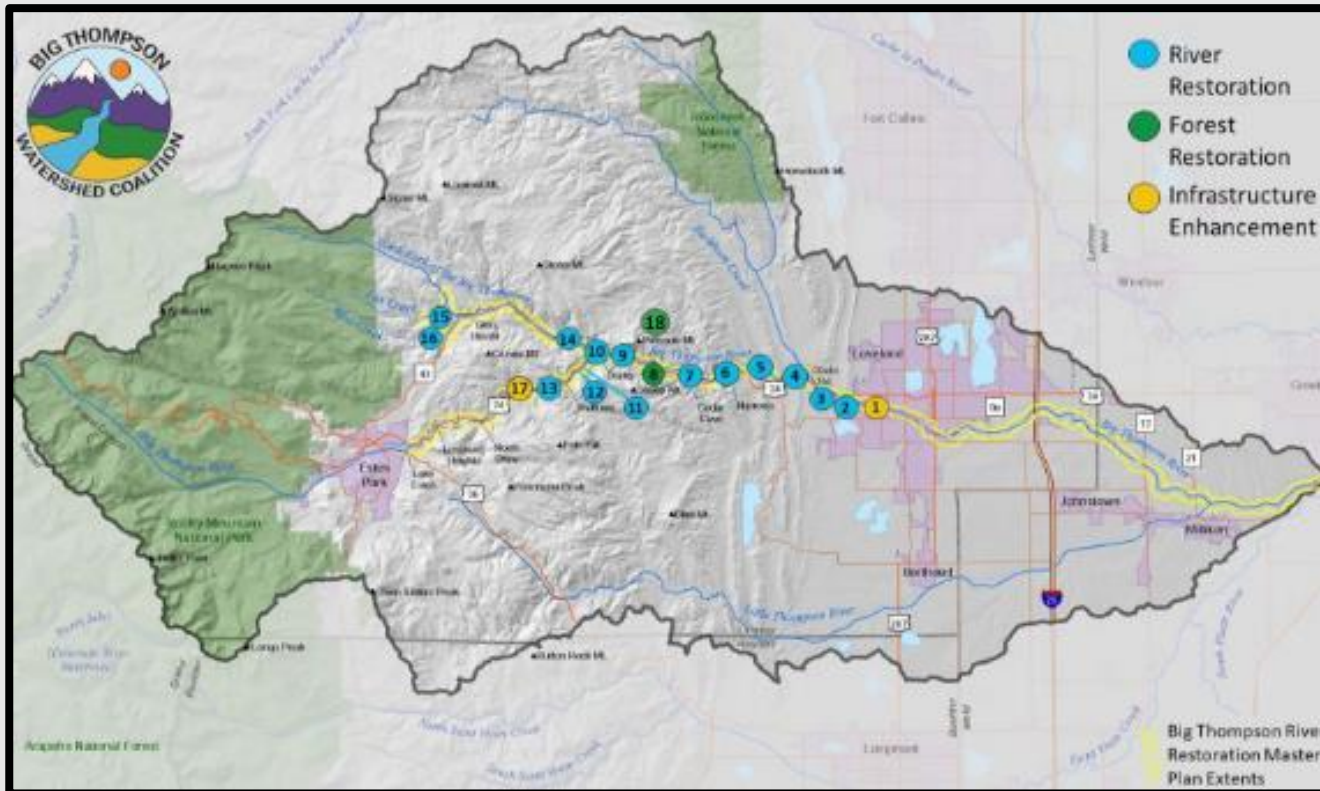
Big Thompson Watershed Coalition

CWA conference 2019



# BIG THOMPSON WATERSHED

*Our mission is to protect and restore the ecological health of the Big Thompson Watershed for the use and enjoyment of our community today and for future generations.*



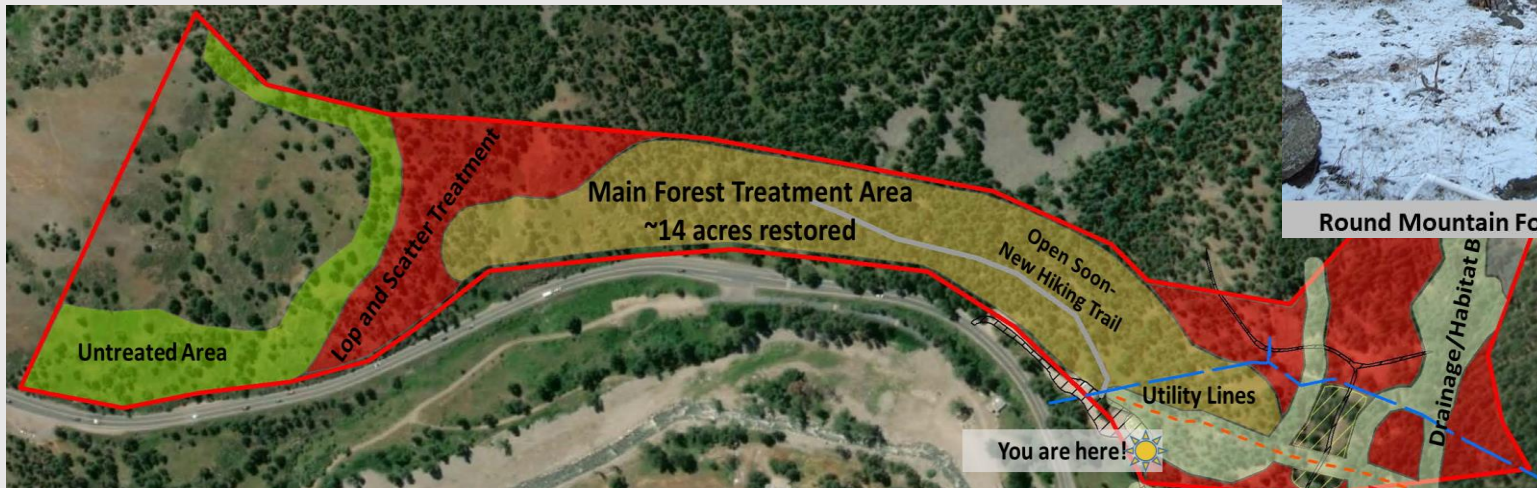
- 832 square miles of land
- 4 million+ annual visitors
- Serves up to 800,000 people across 32 cities
- 60,000 in unincorporated Larimer County



# ROUND MOUNTAIN TRAIL AND PROPERTY

## Project Objectives:

1. Implement a high priority resiliency project
2. Build social/community resilience with respect to wildfires



Round Mountain Forest Survey Plot 2- Before



Round Mountain Forest Survey Plot 2- After





# COMMUNITY ENGAGEMENT SERIES

## Workshop 1: Forestry and Wildfire Ecology



## Workshop 2: Interactive Tour



## Workshop 3: Wildfire preparedness



# OUTCOMES



## Workshop Highlights

**30+** People participated in workshop #1

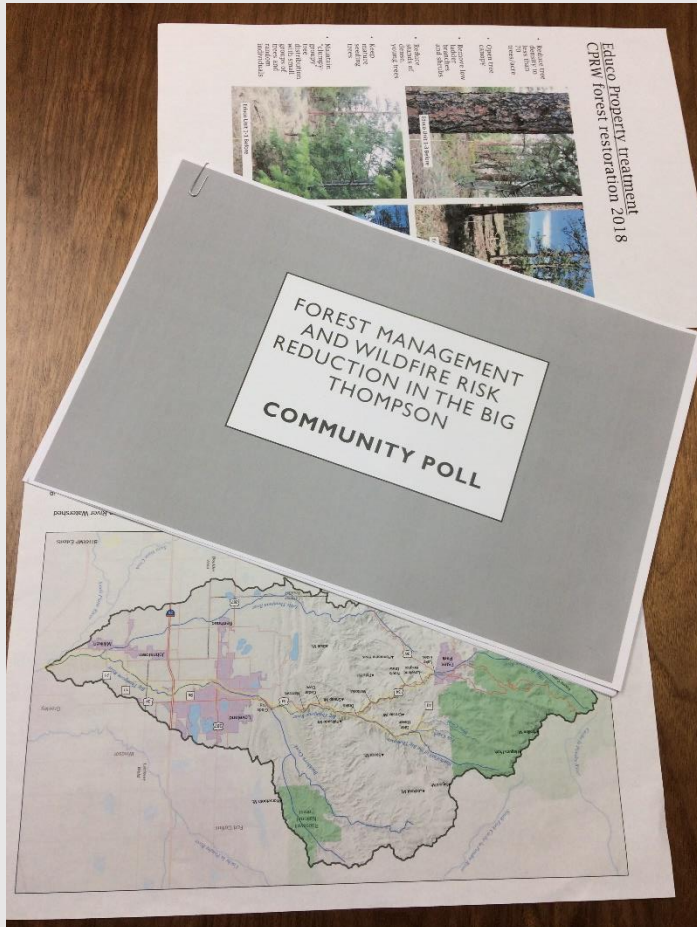
**50%**  Community Members

**30%**  Land & Fire Managers

**20%**  RM Project Partners

**8** Participants came from 8 towns in Northern Colorado

# COMMUNITY POLL



What are top three reasons that participants believe in or support forest management?

-protect water, reduce fuel loads, enhance habitat

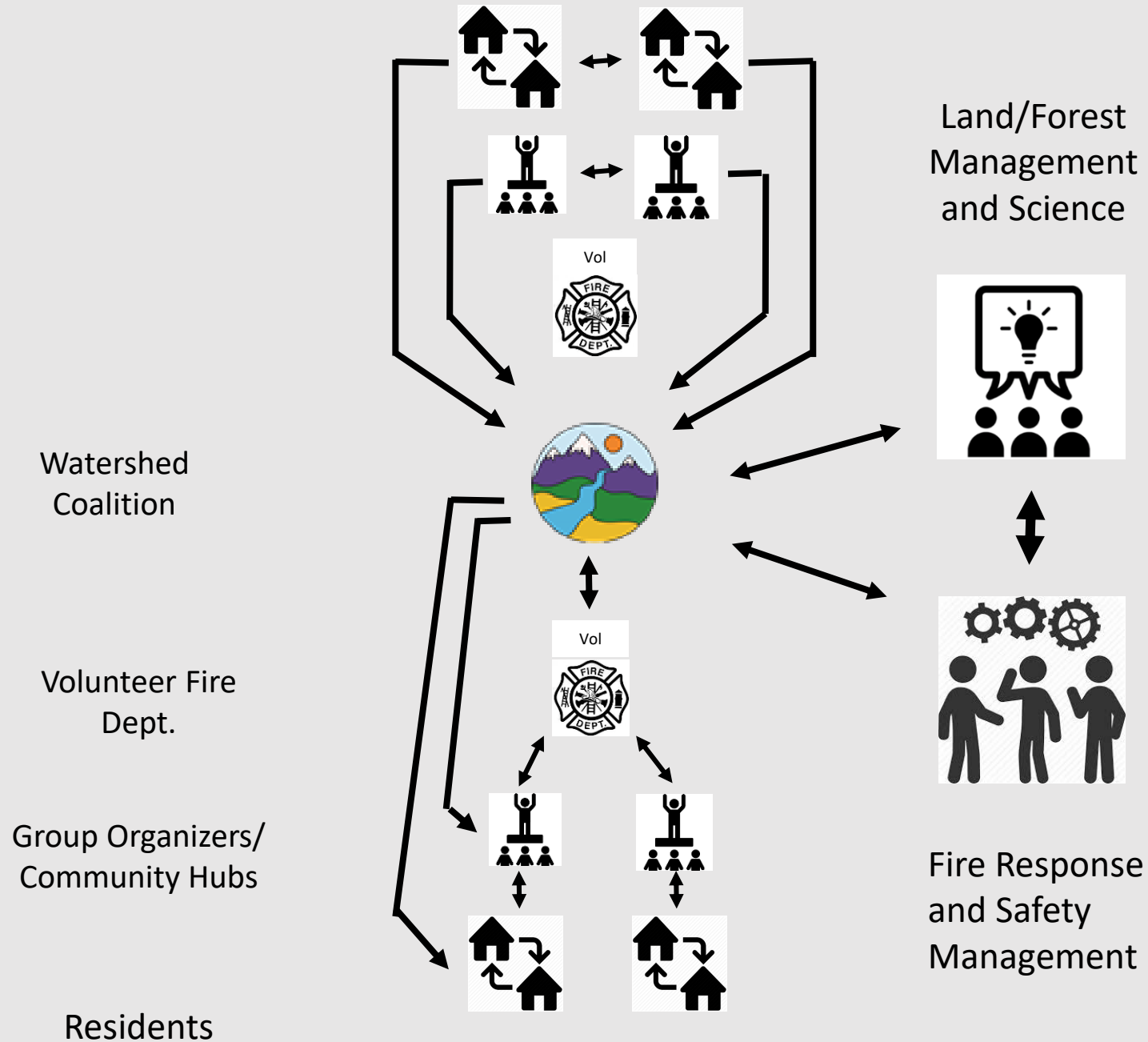
What are participant's top three concerns about forest management and forest thinning in the Big Thompson watershed?

-lack of information sharing, uncertain of forestry, lack of community planning

What are participant's main limitations to performing forest management and wildfire threat reduction on their properties?

-don't have equipment, unsure what to remove, costs are too high or unknown

# PARTNERSHIP DEVELOPMENT





# OVERALL LESSONS LEARNED

Catchy title is helpful



Market these opportunities near and far



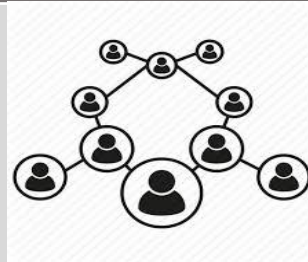
Promote shared messaging



Know what you don't know



Activate you networks and advocates

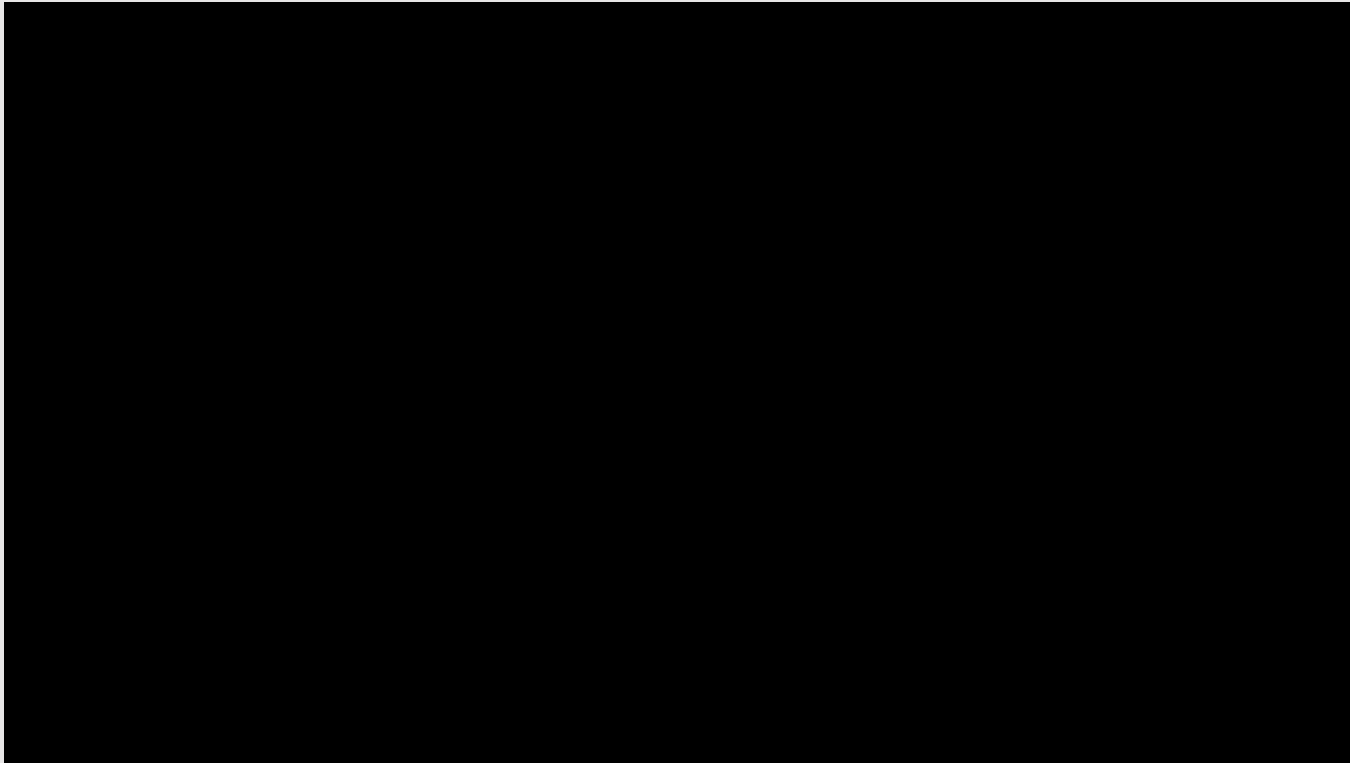


Talk to people (but more importantly listen)





WE WOULD LOVE TO HEAR FROM YOU



Aerial survey video from Natural Focus Digital, LLC.



**Courtney Gutman**

Acting Director | Big Thompson Watershed Coalition

Cell: 970-699-2906 | [courtney.gutman@bigthompson.co](mailto:courtney.gutman@bigthompson.co)

[www.bigthompson.co](http://www.bigthompson.co)

[www.facebook.com/BigThompsonWatershedCoalition](https://www.facebook.com/BigThompsonWatershedCoalition)