

# (Un)Common Partners Come Together to Implement Multi-objective Diversion Structure Projects

October 5, 2021

Sustaining Colorado Watersheds Conference

Hally Strevey – Coalition for the Poudre River Watershed

Sharla Benjamin – Boulder County Parks & Open Space

Tracy Emmanuel – Otak





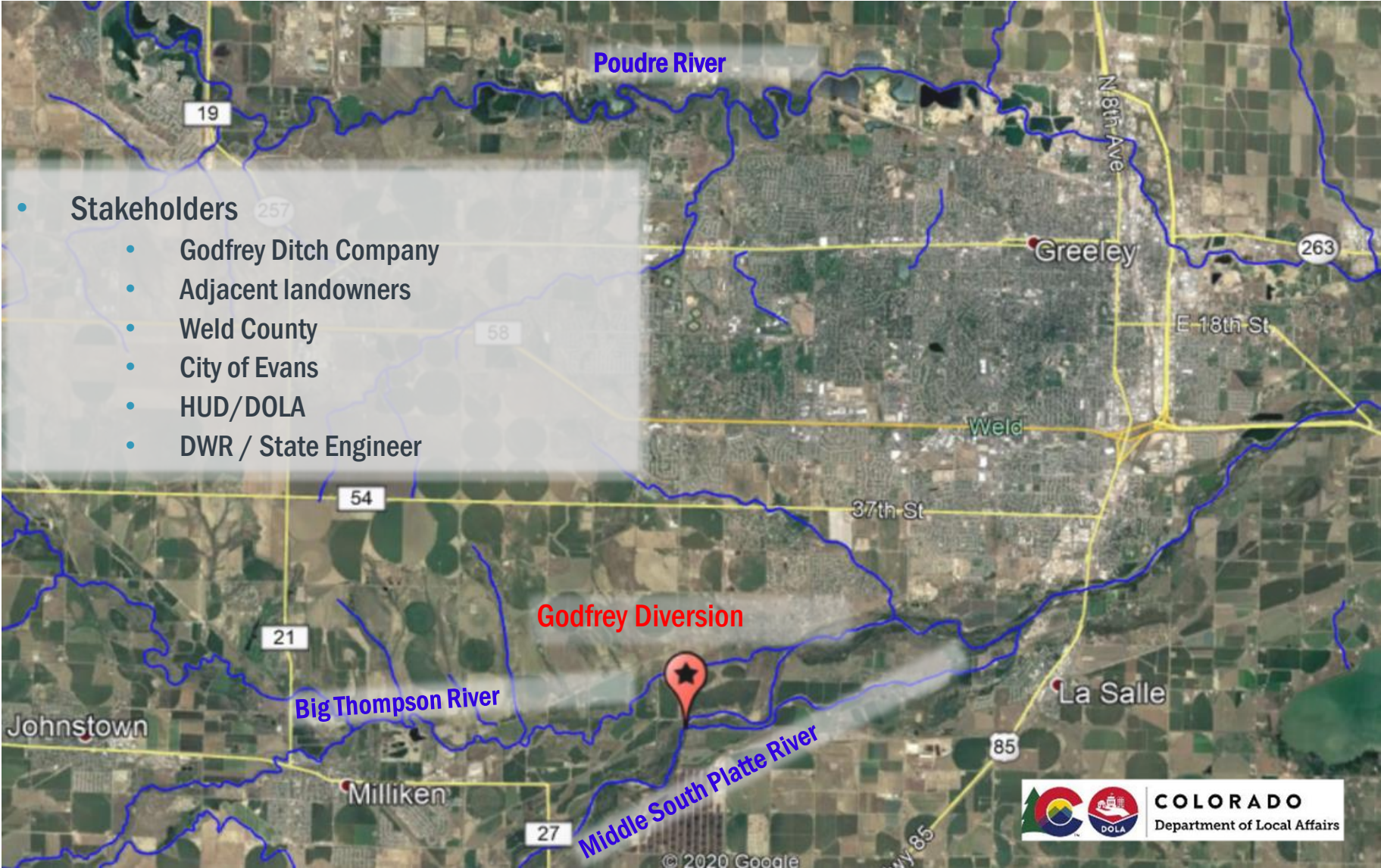
# Agenda

- **Project Examples**
  - **Godfrey Ditch Diversion and Fish Passage**
  - **Longmont Supply Diversion Structure**
- **Success Factors and Lessons Learned**



# Godfrey Ditch Diversion and Fish Passage Project

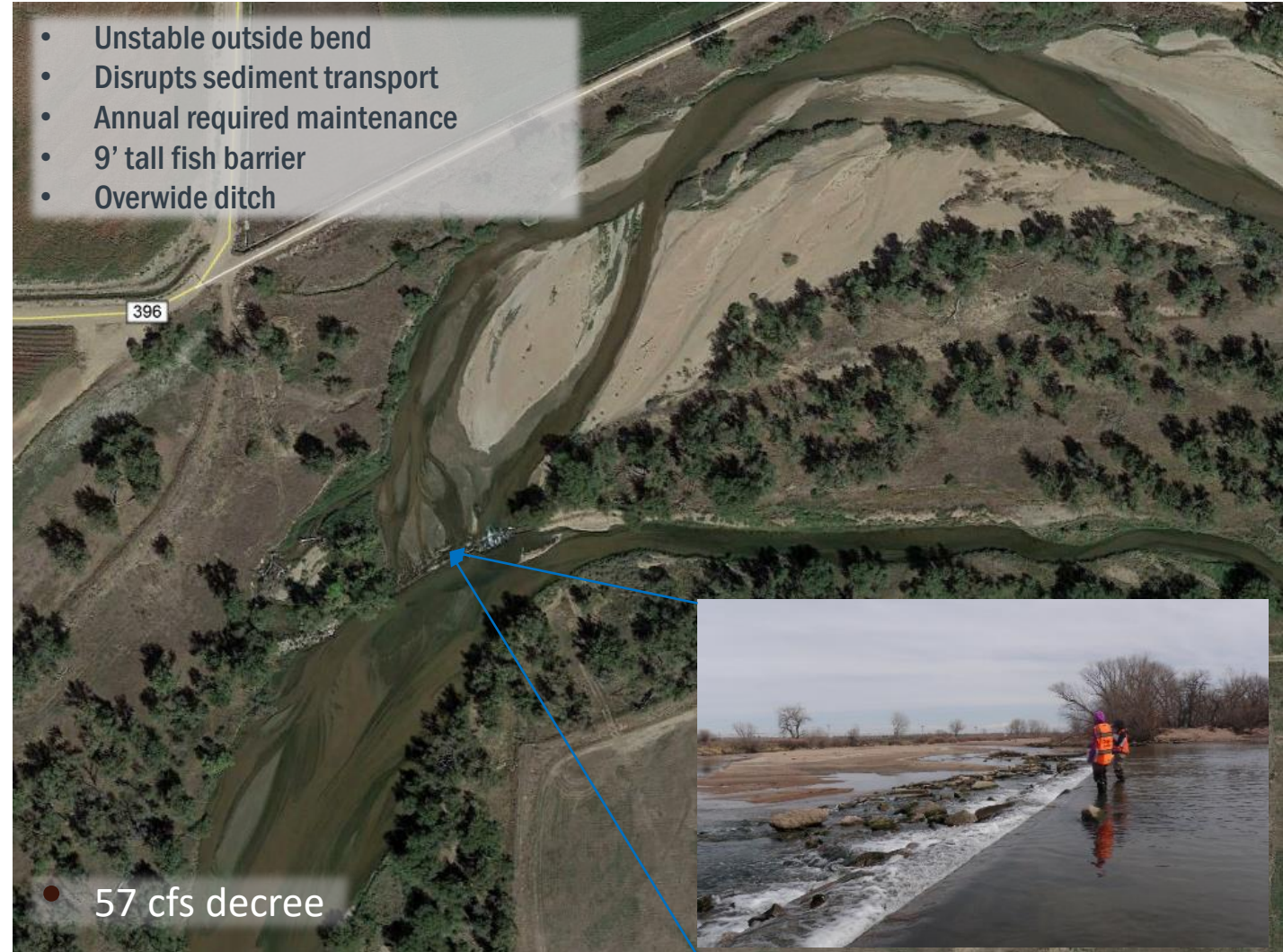
# Godfrey Diversion Relocation and Fish Passage



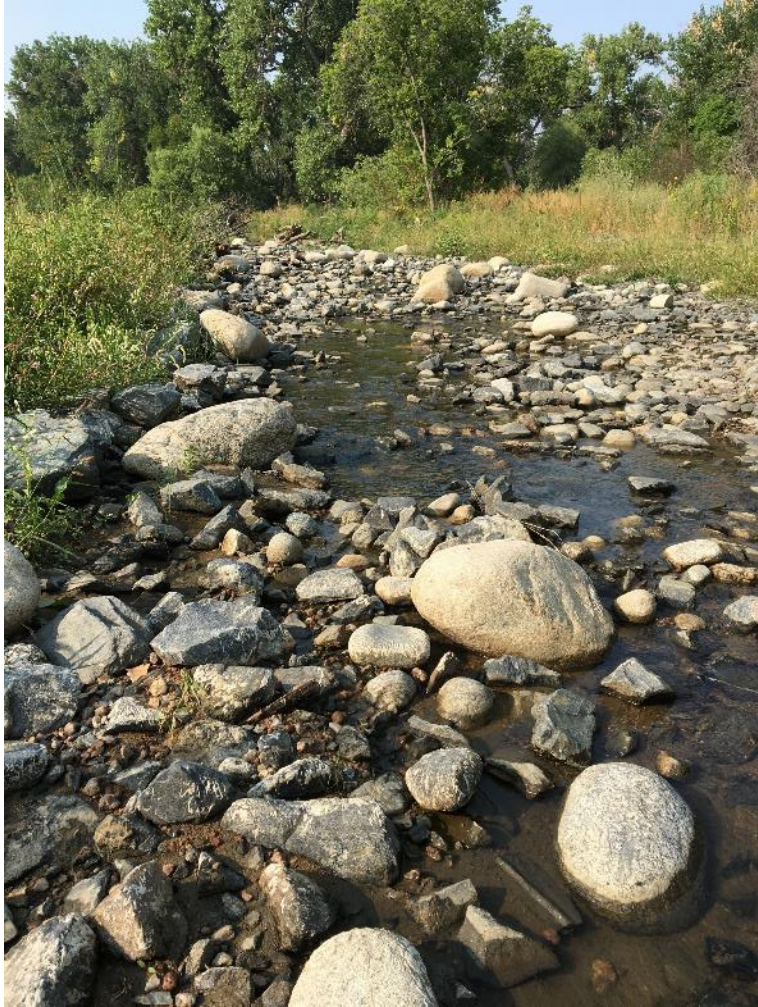
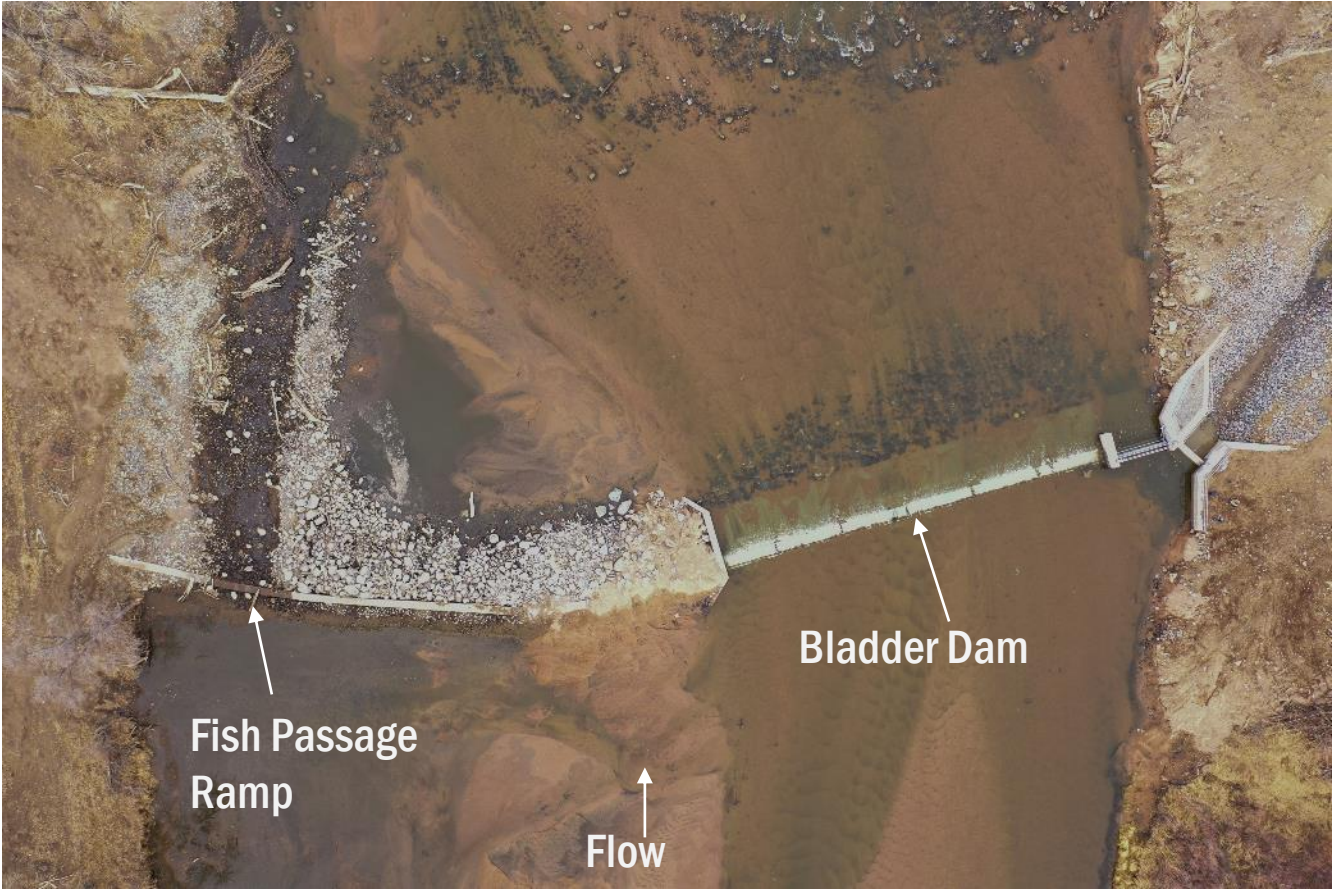
# Godfrey Diversion Relocation and Fish Passage

## Project Goals:

- Reduce maintenance requirements
- Limit damage potential in future floods
- Fish passage and safe recreational boater passage
- Aquatic and riparian habitat improvements
- Reduce sediment transport disruptions
- Increase water efficiency

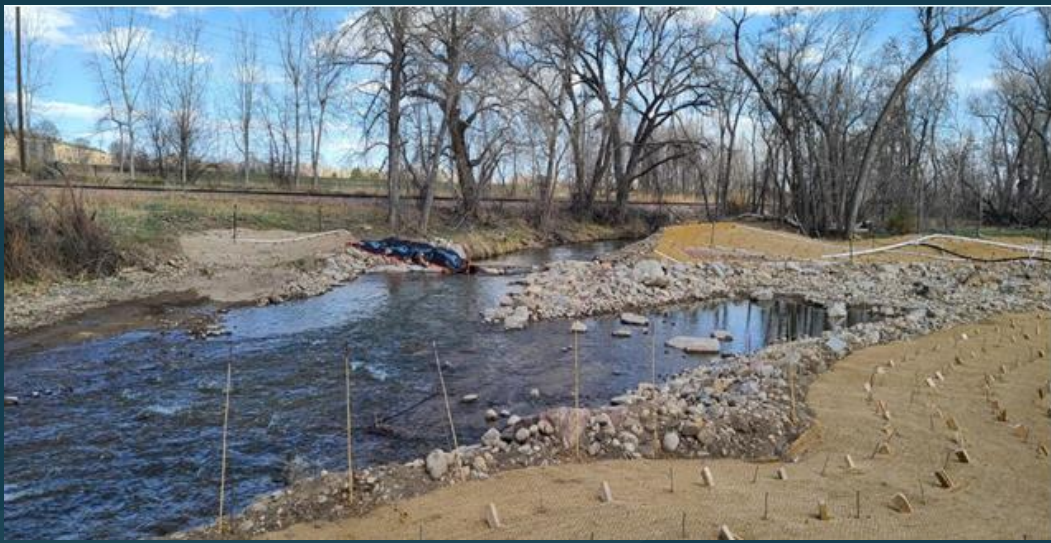


# Godfrey Diversion Relocation and Fish Passage



Fish Passage Channel

# Longmont Supply Diversion Bypass Structure



# Project Stakeholders

- Longmont Supply Ditch Company
- Chapman & McCaslin Ditch Owners
- DWR / State Engineer / Water Commissioner
- Boulder County (Wildlife, Water Resources, Plant Ecology, Project Management)
- HUD/DOLA
- Colorado Parks & Wildlife
- U.S. Fish & Wildlife Service
- Otak, Zak Dirt
- Innovation Center of St. Vrain Valley Schools / OceanFirst Institute / CSU / CU Boulder





# Important Project Goals and Objectives

- Preserve decreed water rights and sweep stream
- Create resiliency for ditch headgates and railroad ballast
- Create fish passage and improve stream and riparian habitat
- Increase floodplain connectivity and stream resiliency to future flooding



# Longmont Supply Project Goals

Native fish cannot jump and are in decline



And trout need to move



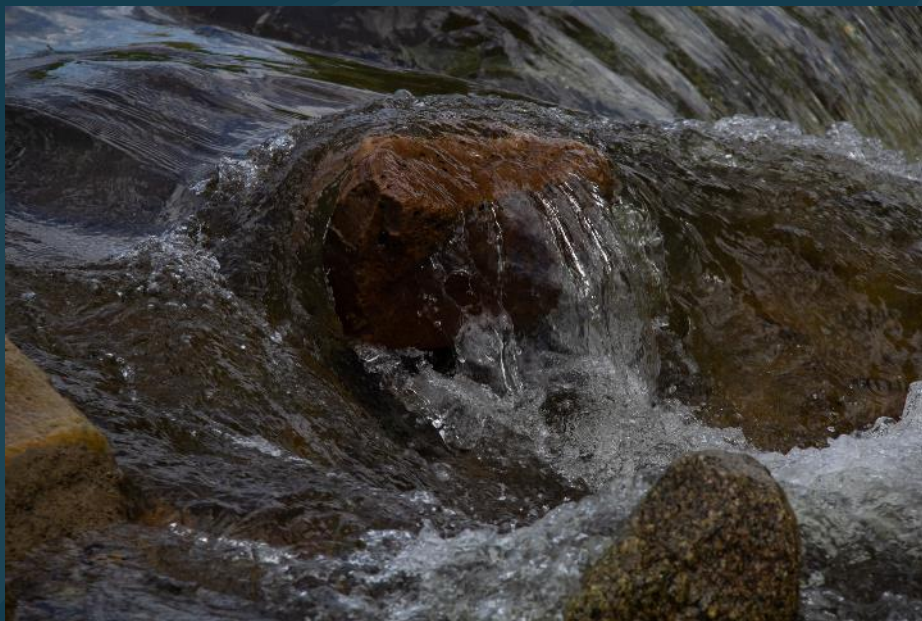
## Preble's Meadow Jumping Mouse





New stream alignment for the St. Vrain Creek that allows for fish passage





# SUCCESS FACTORS AND LESSONS LEARNED

# Success Factors and Lessons Learned

## Godfrey Diversion and Fish Passage Project

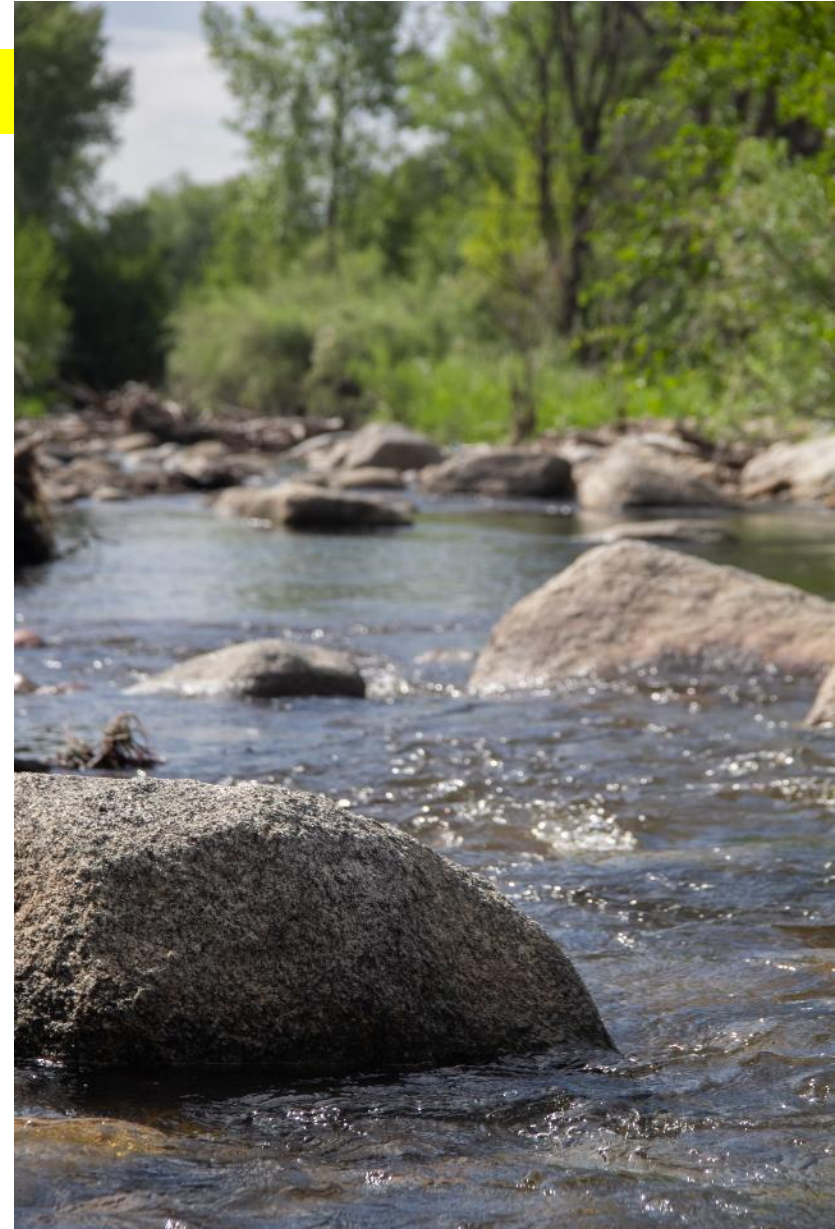
- Ditch company board involvement – early & often
- Understanding the challenges of stakeholders
- Emphasizing mutual benefits
- Ability to obtain additional funding & flexibility with funding deadline
- Commitment to shared vision
- Adaptative management and collaborative partnerships in place
- Creative operator and effective communication



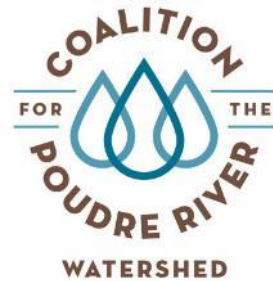
# Success Factors and Lessons Learned

## Longmont Supply Diversion Bypass Structure & Re-route of Main Channel

- Ditch company representatives at the table from beginning to end
  - understand ditch operations
  - no preconceived designs
  - commitment to shared vision
  - respectful listening and walk the talk
- Best value rather than low bid
  - creativity in design
  - creative operator
  - value add-ons: field fitting partnership
- Maintain relationships through Adaptive Management



# Questions?



**Hally Strevey**

*Interim Executive Director*

Coalition for the Poudre River Watershed

[hallys@poudrewatershed.org](mailto:hallys@poudrewatershed.org)

970.222.5754



**Sharla Benjamin, PE**

*Project Manager*

Boulder County Parks & Open Space

[sbenjamin@bouldercounty.org](mailto:sbenjamin@bouldercounty.org)

720.552.1410



**Tracy Emmanuel**

*Project Manager*

Otak

[tracy.emmanuel@otak.com](mailto:tracy.emmanuel@otak.com)

720.758.7723